

Genetic Resources Documentation

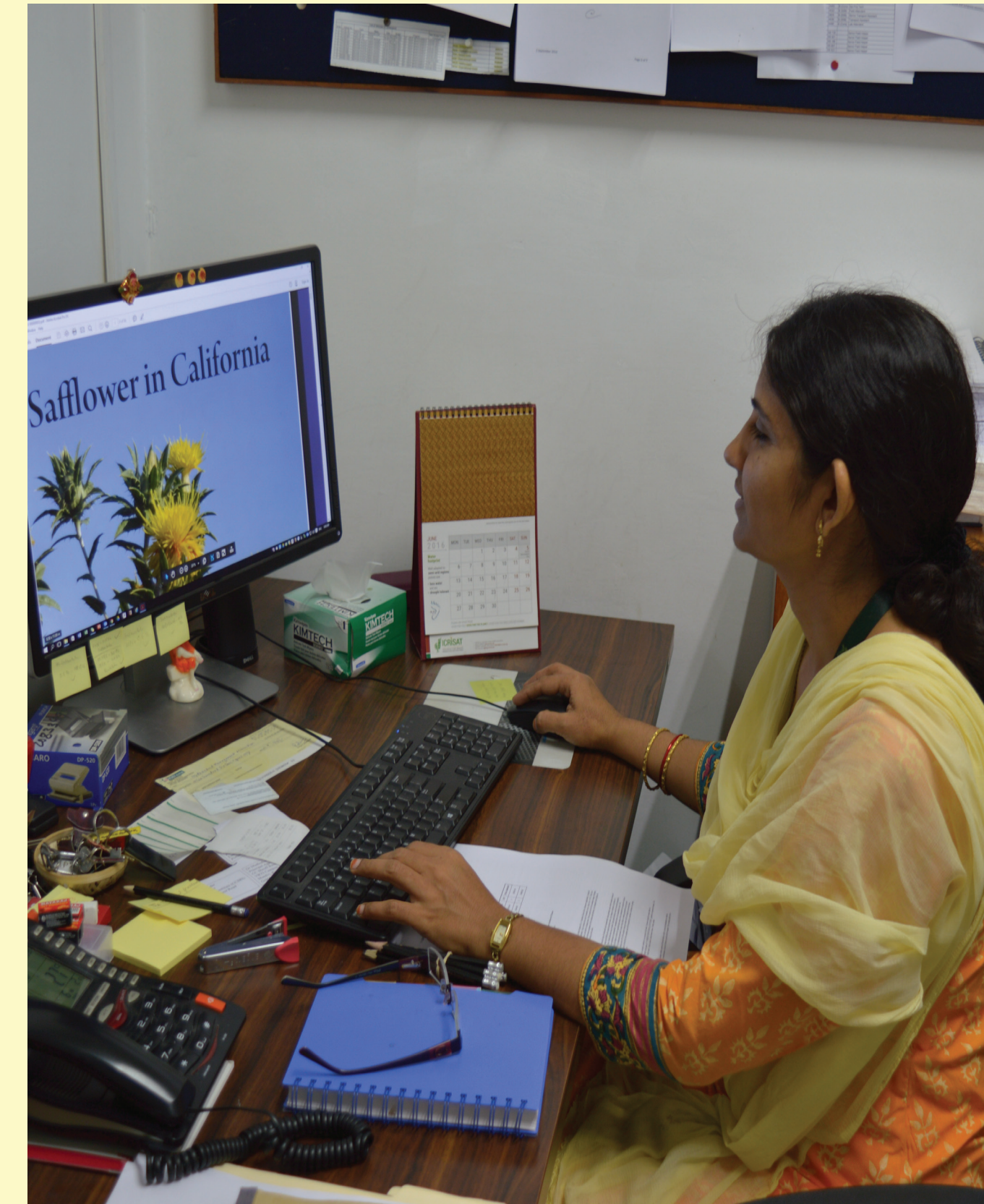
- ❖ Documentation is essential for efficient conservation, management and utilization of genetic resources.
- ❖ Four categories of information on each accession is maintained
 - ▶ **Passport data:** Information related to accession identity and collection.
 - ▶ **Conservation data:** Information on storage, monitoring seed viability and quantity, and regeneration.
 - ▶ **Characterization data:** Information on morphological, agronomic, and nutritional traits and reaction to abiotic and biotic stresses.
 - ▶ **Distribution data:** Information related to seed supply.
- ❖ Passport and characterization data can be accessed through
 - ▶ <http://www.germplasm.ICRISAT.org>

GRIN-GLOBAL

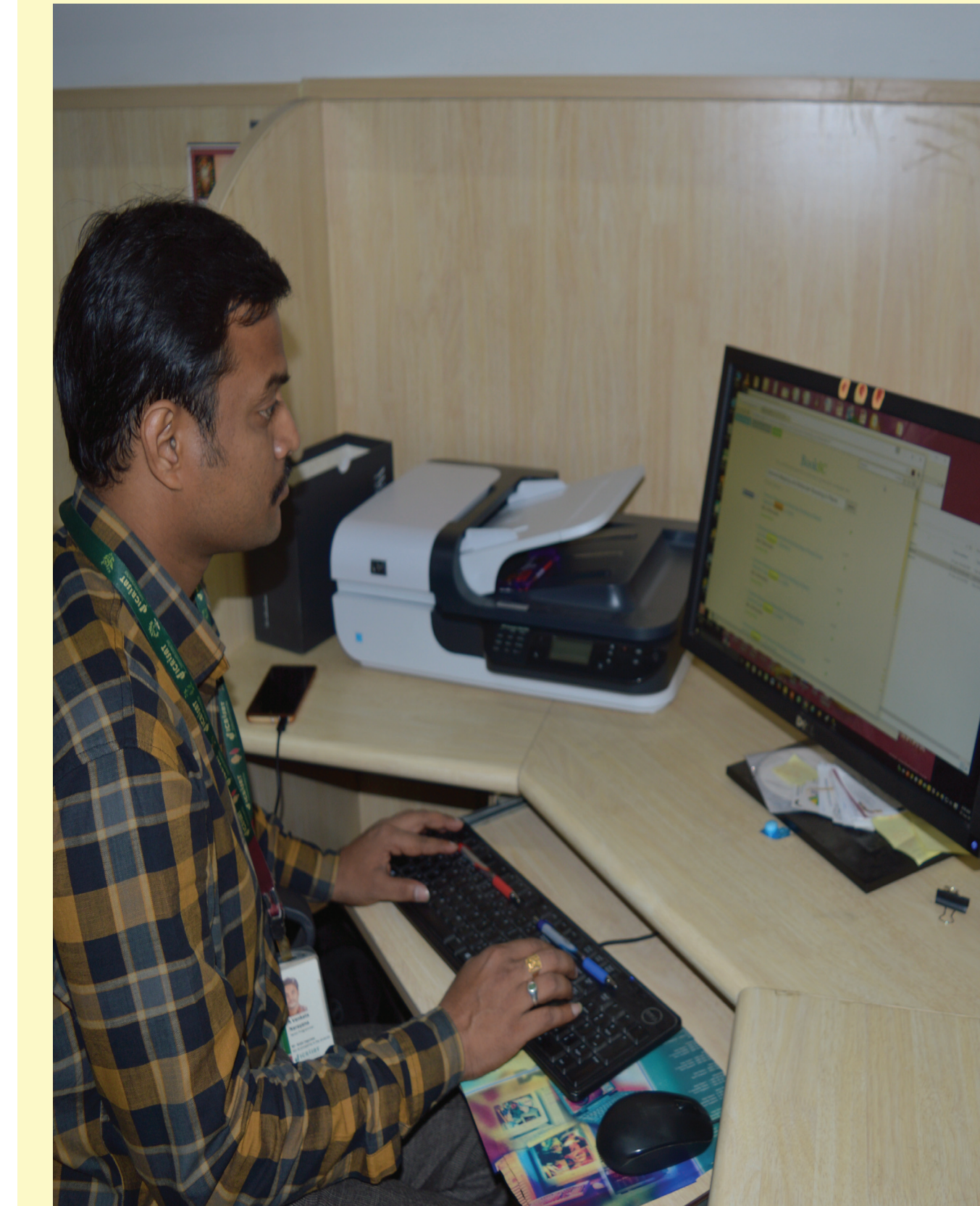
- ❖ We document information on all activities of germplasm conservation
- ❖ We are migrating all data into GRIN-Global database platform (global plant genebank information management system)



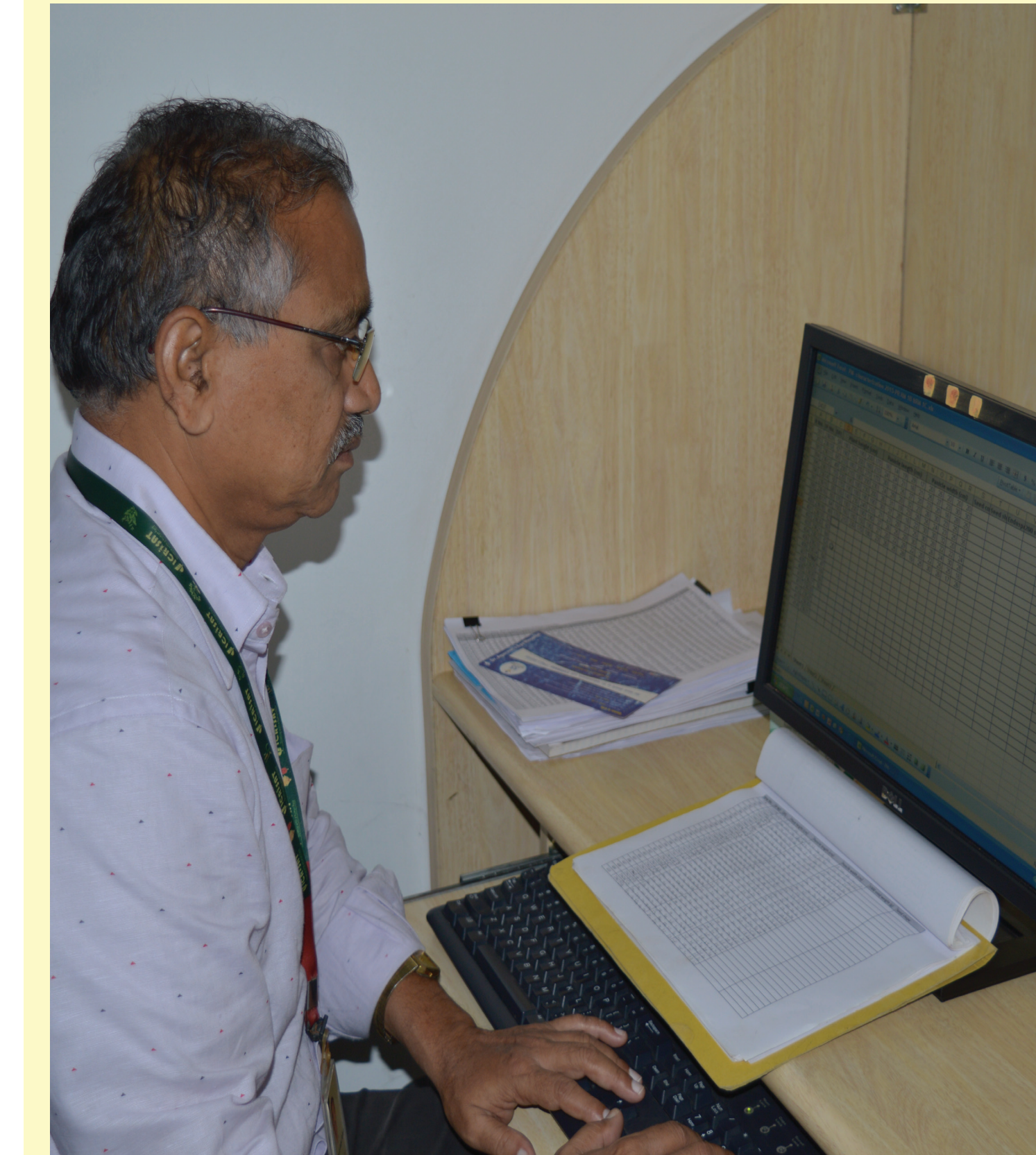
Browsing the germplasm databases.



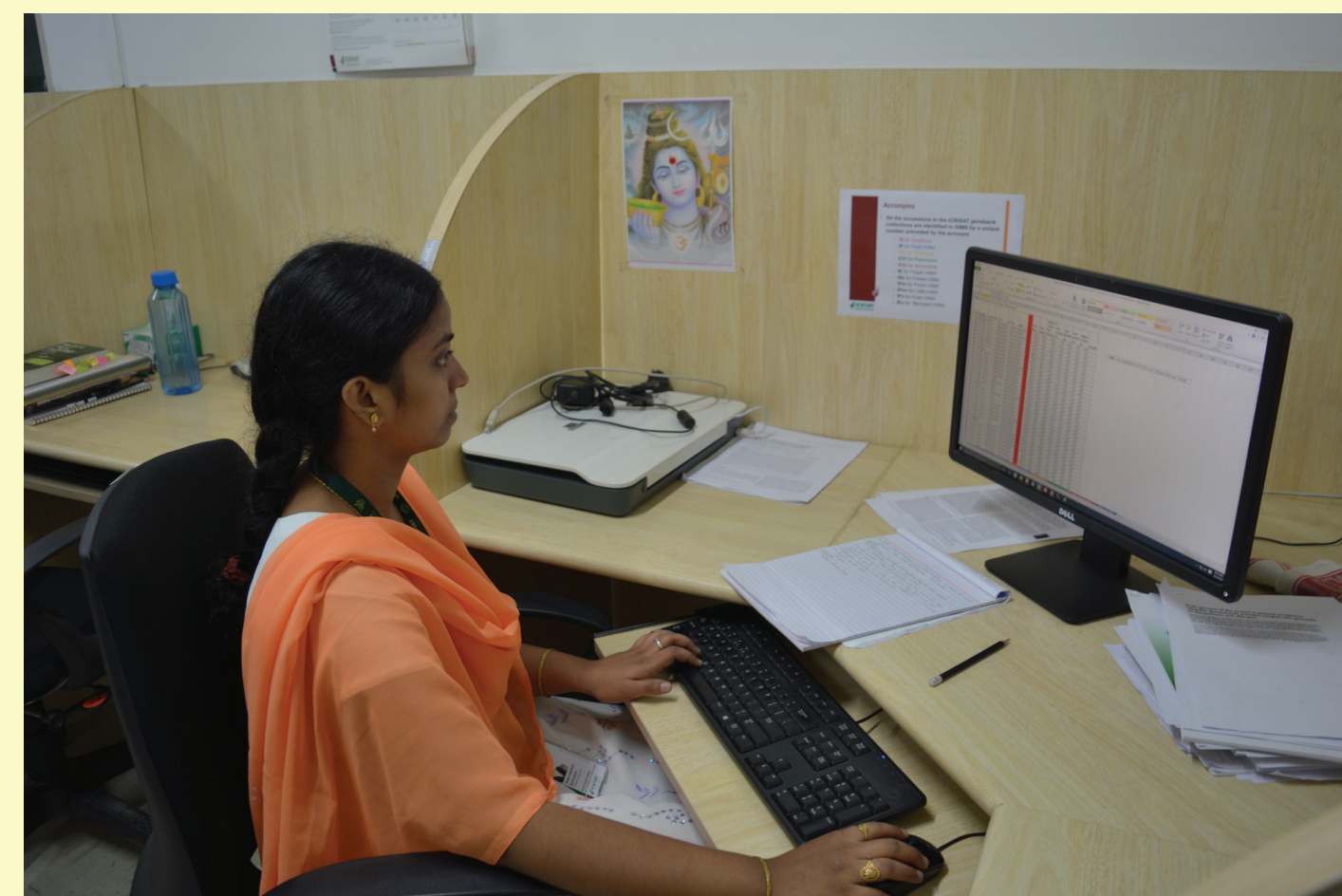
Comparing databases to identify unique germplasm.



Updating databases.



Documentation of characterization data.



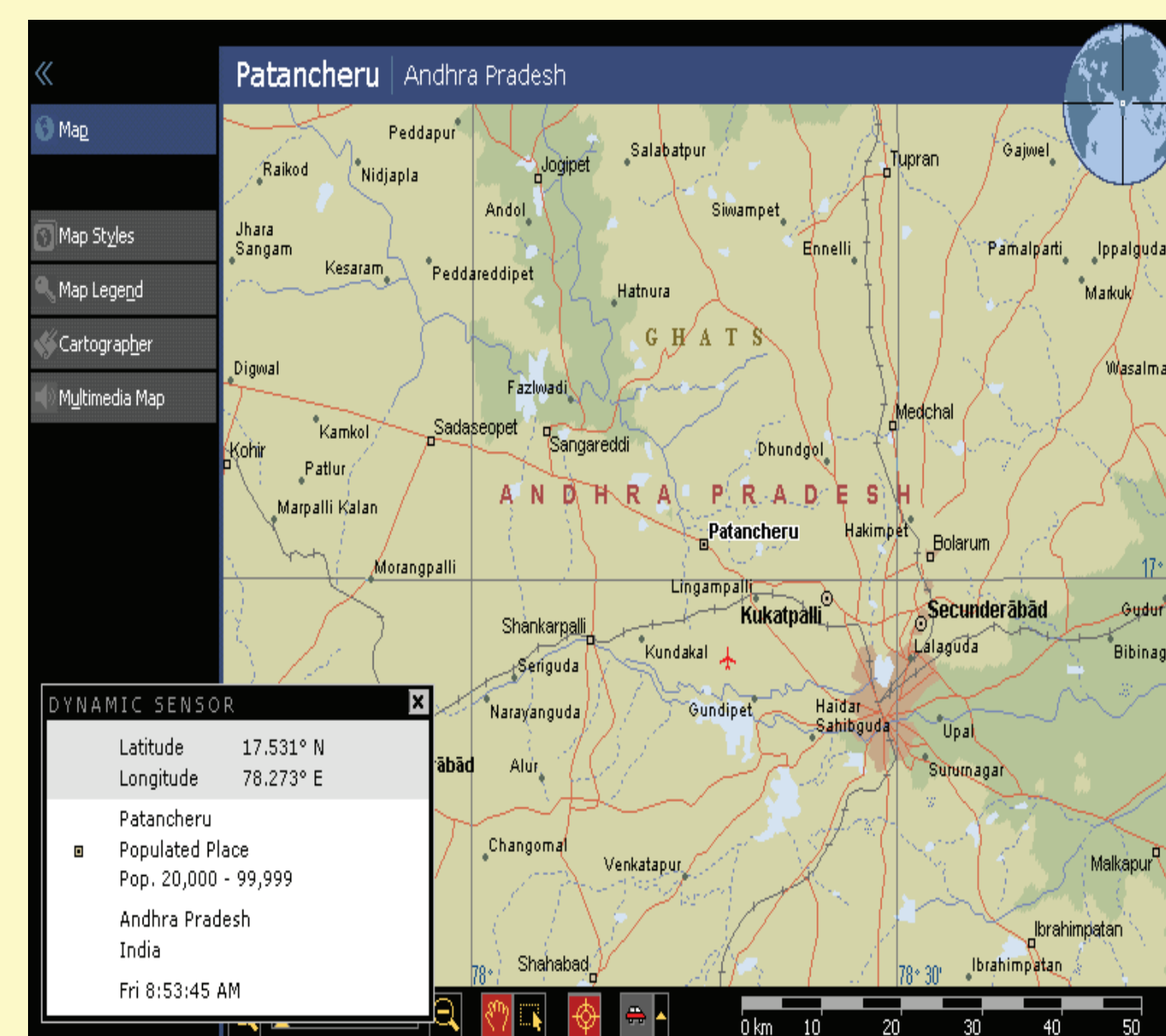
Checking for the validity of data.



Copying information.

Data Quality

- ❖ Using Encarta® an Interactive World Atlas updated/retrieved georeference data for over 58,000 accessions.

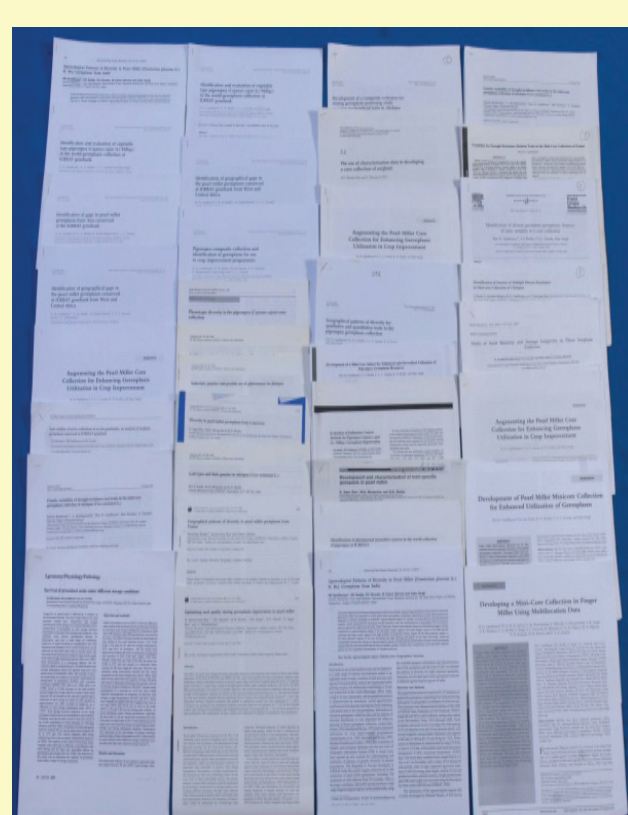
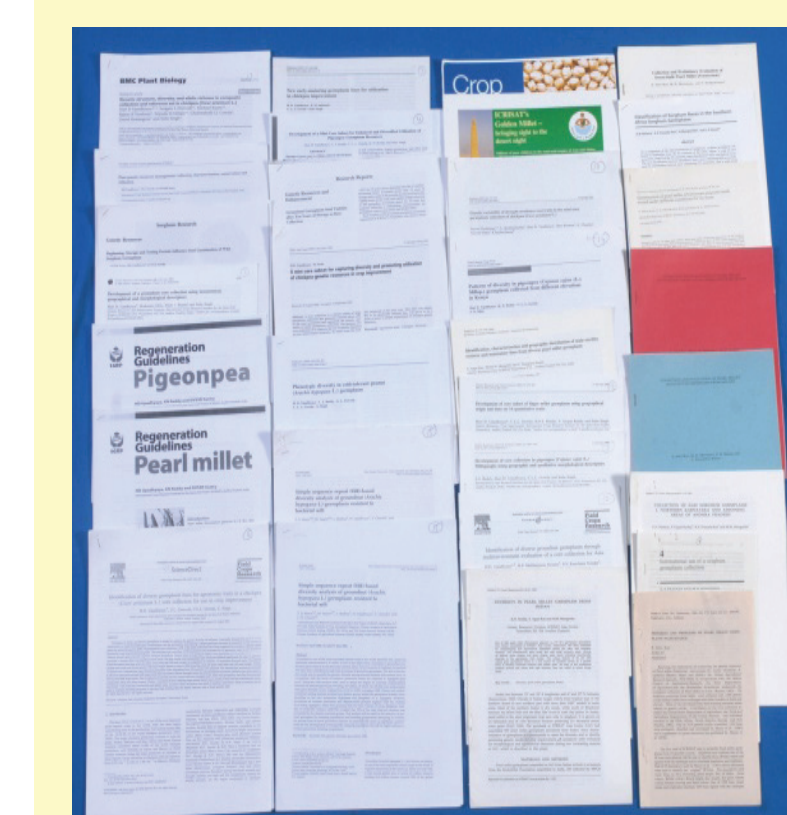


Information dissemination

- ❖ Scientists at ICRISAT genebank have published (more than 1,000) journal articles, book chapters, catalogs, information bulletins, crop descriptors and posters, for knowledge sharing and selection of germplasm by researchers for use in crop improvement programs.



Publications from the ICRISAT genebank.



Publications from the ICRISAT genebank.